



Oh Hello Summer!



Dear friend,

While I don't play favorites, Memorial Day weekend is always a highlight among Kent's many wonderful times of year. And I can't remember a Memorial Day without the Kent Land Trust Community Picnic.

For two decades KLT has welcomed people after the Town's Parade on the old fairgrounds just south of town-center. And while the family activities and BBQ menu have evolved, the neighborly effort and goodwill haven't changed one bit. Please be our guests for lunch, live music, camaraderie, and fun, from 11am to 1pm. Walk or drive to the Field after the Parade and Lions' ice cream favor. Rain or shine (we're rooting for shine)!

So we'll be setting out our red, white, and blue, but meanwhile have you noticed one particular shade of blue is currently having a moment? Seems like "everywoods" in Kent are resounding with the fizzy upward crescendo of Kent's most famous warbling migrant, Cerulean Warbler. From all over the tri-state area birders are flocking to sites like River Road, fancy cameras in hand, checking live updates on eBird. Have you heard them too? Here's what to listen for: [Cerulean Warbler Song](#) (from the YouTube Channel of the American Bird Conservancy).

Cerulean warblers are a) beautiful and b) elusive but they're also c) important signifiers of forest health and therefore a keynote species in KLT's Macedonia Forest Block Important Bird Area initiative, which brings together landowners within the Block's 22,500 acres in Sharon and Kent to align their land management. Below, KLT Correspondent Alison Robey shares why this coordination matters, more so than ever before.

Memorial Day means college students are back for the summer, which in turn means the arrival of this year's Kelly Alisha Tobin interns! Please join us in welcoming Ella and Sam to our team!

Also in this eNews we're asking you to lend your voice to a creative new project KLT is working on with the Warren Land Trust. Our public survey is open through June 19th - why not [submit your response](#) now?

There are many ways to get involved in enjoying and caring for Kent's amazing environment - find us at Kent's Farmers Market, on Facebook and Instagram, out on the trails, and here [at this email](#) whenever you have questions, feedback, or ideas.

Welcome KAT Summer Interns!



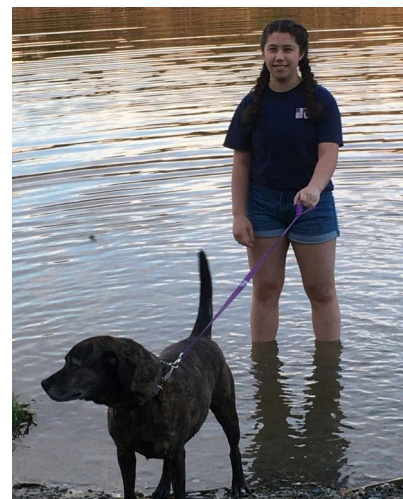
Each summer, the Kent Land Trust offers a paid college internship honoring Kelly Alisha Tobin. Kelly loved animals, wildlife, and the outdoors. In 2014, she found an injured hawk at her family's home in Warren CT. The hawk was carefully delivered to Sharon Audubon Center for rehabilitation and once healed was returned to her home for release. A group of Marvelwood students gathered to watch Kelly release "Tobi" back into the wild. In that moment a spark ignited within her - a deep passion for conservation, education, and connecting people with the natural world.

KLT's program fosters personal and professional growth through hands-on conservation experience. Our interns' dedication to improving their environment has led to meaningful impact, both in the short term while with KLT, and long after, as they have gone forward with further study and work in the field.

You'll meet Ella and Sam this summer at Kent's regular public events and a few special ones they're working to plan. When you do please say hello and thank them for pursuing this professional direction!



Samantha Molzon. Sam is an Honors Biology student at Eastern Connecticut State University and has previously worked as a Field Technician for the Connecticut Department of Natural Resources and UCONN. She is an active volunteer, a Future Farmers of America alum, and lifelong CT resident. Her work this



Ella Rydingsword. Ella is a student at Paul Smith's College pursuing an Associate's degree in Forest Technology and a Bachelor's degree in Parks and Conservation. She is a lifelong resident of Salisbury/Lakeville, CT. Ella's strong interest in trees, forest health, and land management motivates her work this summer

summer includes a full inventory of plant and wildlife species within one of our newly protected preserves.

mapping notable trees within KLT 's nature preserves.

Vital Habitat

Alison Robey, KLT Correspondent



"A place like Kent demonstrates the truth about the saying that everyone knows everyone in a small town: I rarely make it through a trip to the IGA or the House of Books without running into someone who greets me by name. As I have gotten more involved in the birding community, however, this turn of phrase has taken on a new dimension; now, I rarely run into birders who don't know about my little hometown. The reason? One tiny, 3-ounce-small bird: [the Cerulean Warbler](#)."

[Read Alison's perspective](#) on these charismatic creatures, her sobering presentation of eastern forest bird population declines, and why we all have a role to play in tipping the scales in favor - or against - bird species' continued survival.

Our Trails Survey is Live!



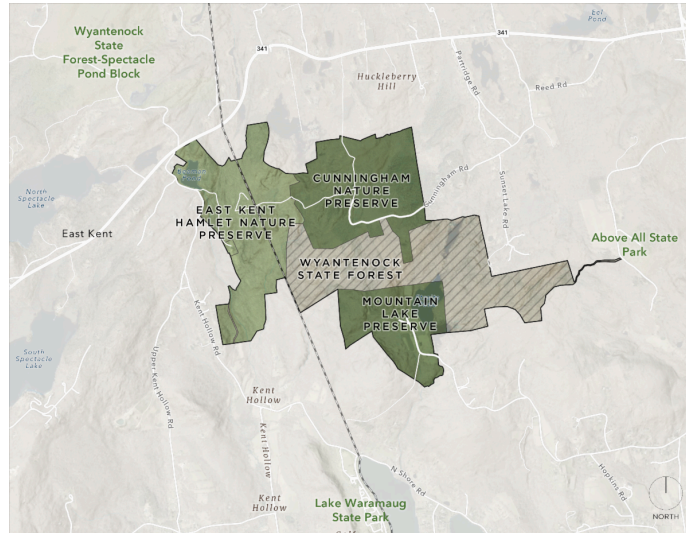
The towns of Kent and Warren share a border, and the Warren Land Trust and Kent Land Trust protect connected properties surrounding that border. The East Kent Hamlet Nature Preserve, Cunningham Nature Preserve, and Mountain Lake Preserve are part of a contiguous block of protected land open for public enjoyment.

With generous support from the State of Connecticut through the Connecticut Recreational Trails Program, our land trusts are developing a master plan to guide future trail and preserve improvements in these properties, and set us on a path to managing them collaboratively.

Now through June 19th we are conducting a public survey to help us balance recreation, accessibility, and conservation across these special places. **Let us know how you use trails and what you'd like for this area.**

The survey takes only a few minutes, and will be so helpful to us - thank you! Click this link to participate: <https://bit.ly/WarrenKentTrailsSurvey>.

Haven't had the chance to explore Mountain Lake Preserve yet? Join us on CT Trails Day Saturday, June 6th from 10am - noon when the Warren Land Trust will conduct guided hikes within this newly-protected natural area. [Find more info and registration here.](#)



Upcoming Opportunities



Volunteer Workday

Join Stewardship Associate Zach Orluk at our Tobin Preserve for a volunteer workday focused on caring for the history and ecology of this landscape. We'd like your help to clear invasive vines off historic stone walls, and restore the trails in the meadow.

Audrey and Robert Tobin Preserve

Saturday, July 18th
9:00 AM

All are welcome, your help is so important to us!
Registration is required to communicate weather-related changes.

<https://bit.ly/KLTactivities>

info@kentlandtrust.org or 860-592-0011

This activity is for ages 10 and up.

REGISTER HERE



Directions to KLT's Tobin Preserve.
Take Route 7 North to Carter Rd., take the first left onto Dugan Rd. Drive slowly to the top of Dugan Road, turn right, and proceed to the parking at the end of the Preserve's access road.

The preserve map can be found at:
<https://www.kentlandtrust.org/anchor-page-for-tobin-preserve>

Please wear sturdy footwear, bring loppers, clippers, and a water bottle.
We will provide light refreshments.



Reflection on Skiff Mountain

Take a slow and intentional walk with us in nature where attention is gently anchored to breath, body, and surroundings to cultivate calm, presence, and connection.

Saturday, July 25th
9:00 AM

<https://bit.ly/KLTactivities>

Registration is required to communicate weather-related changes.

info@kentlandtrust.org or 860-592-0011

KLT's Skiff Mountain South

Follow Skiff Mountain Road to the top of the hill just before the Marvelwood School soccer fields.

The preserve map can be found at:
<https://www.kentlandtrust.org/anchor-page-for-skiff-mountain-south>

REGISTRATION LINK



At just under 3 miles roundtrip, the Skiff Mountain South trail is an easy to moderate hike with a view. Please wear sturdy footwear and layered clothing. Bring a water bottle and carry an open mind ready to slow down and take in the experience!

The Kent Land Trust safeguards an ecosystem which in turn supports us all, at the most basic level: integrity of the air we breathe and water we drink. We envision a community where iconic landscapes are protected for today and the future. Where diverse living things continue in healthy coexistence, supported through the challenges of a changing environment. And where welcoming outdoor spaces inspire people to connect. Our role is daunting, but compelling. We promise assiduous focus on Kent's distinct needs even as we join colleagues doing the same throughout our region and beyond. Your membership each year directly advances this vision.

Thank you sincerely for your generous support!



[Visit our website to donate online](#)



Try email marketing for free today!